



# 6S60MCC M/E Replacement and Repair Project

# Contents

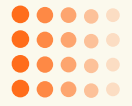


- **Background**
- **Technical Preparation and Quotation**
- **Production Organization and Delivery**
- **On-site Guidance For Installation**
- **Result**



01

# Background



# Previous status and problems of M/E



was flooded with sea water and severely rusted.

Due to room water intrusion, the main engine was flooded. It was used to carry out emergency maintenance. After being left for two months, parts of the main engine

The Bed Plate, A-Frame, Connecting Rod, Piston Rod, Main bearing, Connecting Ring, thrust bearing, and other components cannot be repaired.



02

# Technical Preparation and Quotation



# Technical Preparation and Quotation

## Difficulties :

- 01 Spare parts are involved in wide range , many sub-items, and large quantities.  
Total 55 major items; 394 sub-items; 6002 items  
The quantity and types of unconventional items are large, such as: BED PLATE, A FRAME, etc.
- 02 The delivery time is 12-18 months which cannot meet the owner's requirement which is to set vessel operation within one year.

## Solutions:

- 01 Rely on our own technical advantages to check drawings, confirm items specifications and delivery dates for regular projects, then quickly quote;
- 02 Rely on the advantages of long-term cooperation with Chinese MAN MAKER FACTORIES (DMD, CSE), we got the shortest delivery time for major parts such as BED PLATE,A-FRAME etc., under MAKER FACTORIES' support.



# Technical Preparation and Quotation

## Comparison of final quotation and delivery time:

Quotation Source	D/T	Quotation Completeness Rate	Maximum Delivery Period	Price Comparison
MAN	30 Days	85%	18 Months	0
JAPAN ENGINE MAKER	>30 Days	80%	12 Months	+30%
ALTRA	7 Days	100%	6 Months	-30%



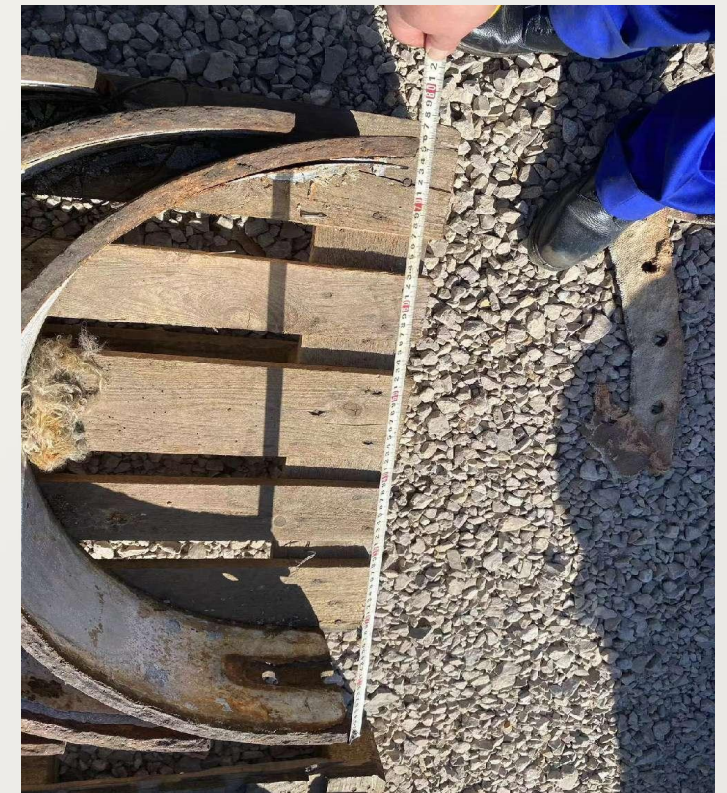
03

# Production Organization and Delivery



# Production Organization

- Go on board with the Maker factory engineer to measure the major parts dimensions to ensure correct supply. Specially for the accurate installations of Bed plate & Hull, A-frame & Cylinder Block.



- Maintain close communication with the Maker Factory and regularly go for on-site inspection to ensure productions follow delivery schedule.



●○ HUAWEI Mate 20 Pro  
●○ LEICA TRIPLE CAMERA | AI

●○ HUAWEI Mate 20 Pro  
●○ LEICA TRIPLE CAMERA | AI

●○ HUAWEI Mate 20 Pro  
●○ LEICA TRIPLE CAMERA | AI



# DELIVERY

01

FIRST INSPECTION IN FACTORY →



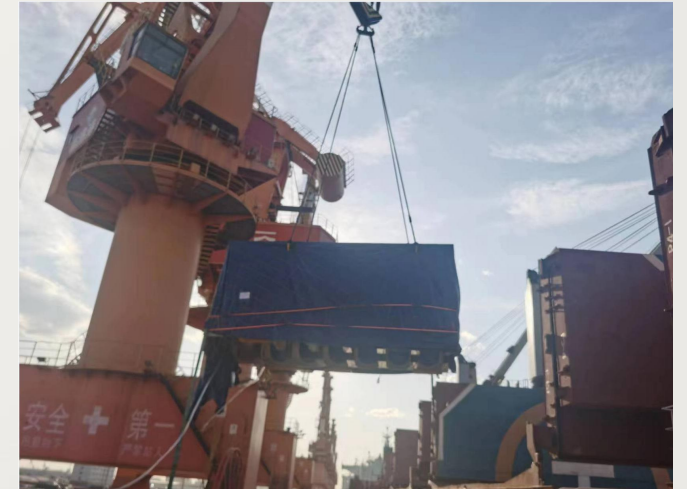
02

SECOND INSPECTION IN OWN WAREHOUSE →



03

DELIVER TO DESTINATION →





04

# On-site Guidance For Installation



# On-site Guidance For Installation

A

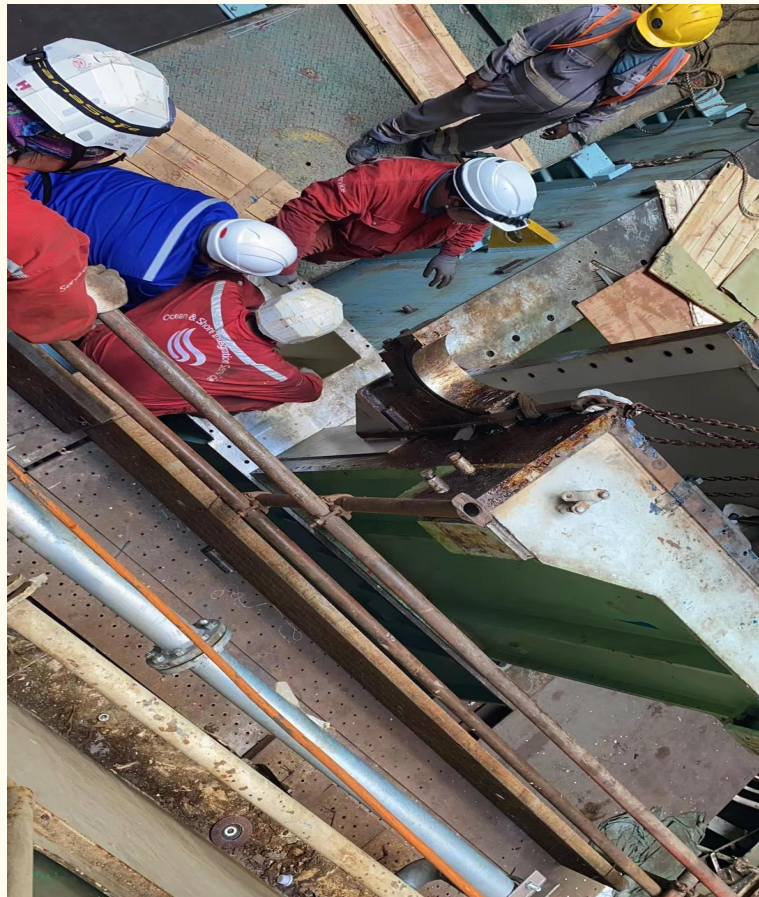
## **On-site technical guidance**

Go on board with the MAKER engineers to provide on-site technical guidance with professional technical documents for installation.

B

## **Supply miss ordered items on-site**

Due to the Project complexity, there were under-ordered items during installation. We arranged quick supply and items arrived within 4 days. For the parts that affects progress, our employee was required to fly to Oman with spare parts to avoid delay for installation. This action has saved USD20000 for onwer.





05

**Result**





# The M/E runs successfully and Ship sets sail





**Thanks**

---